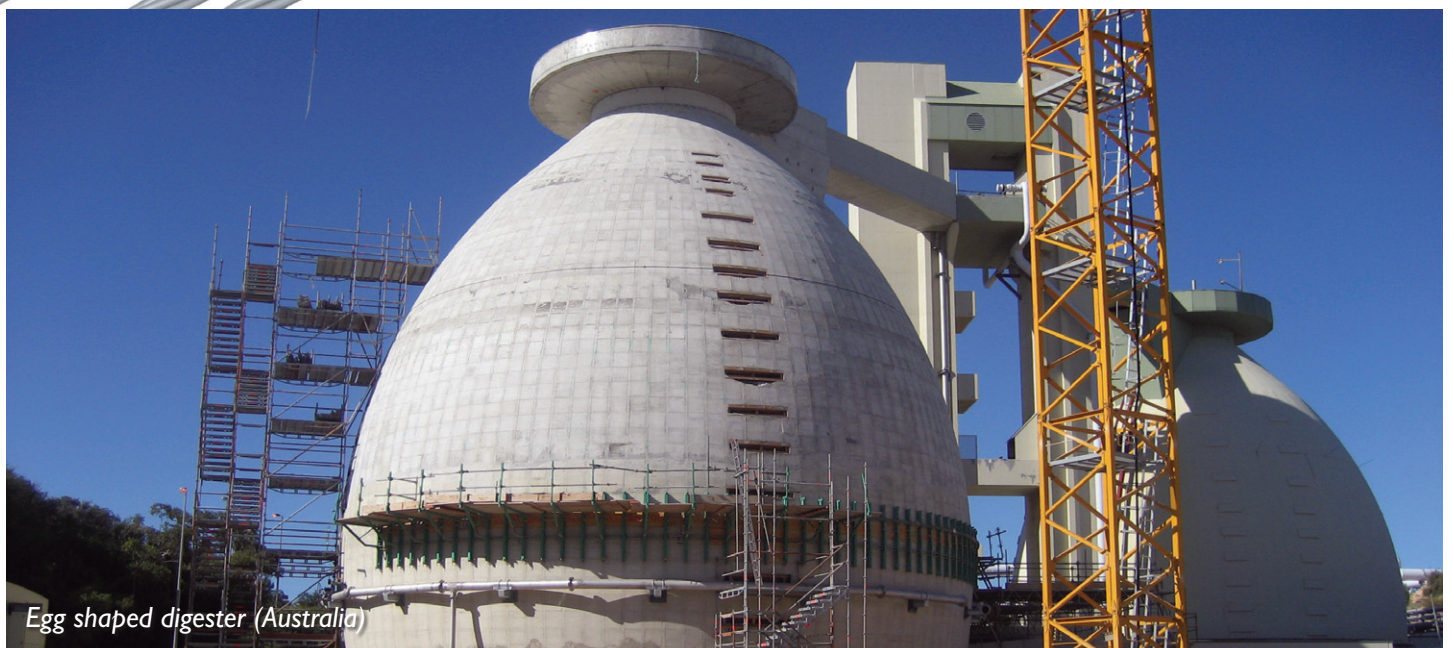
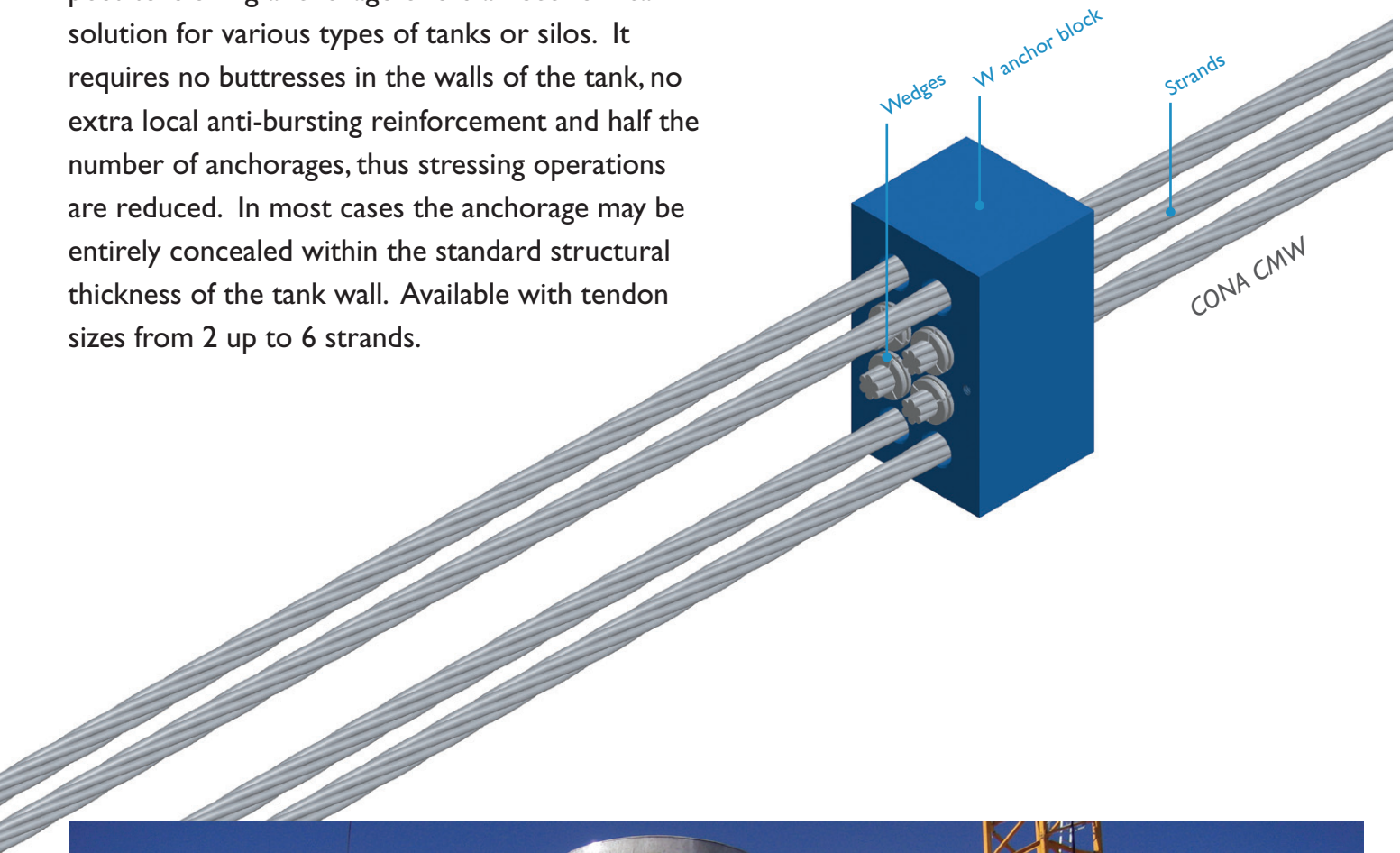


BBRVT CONA CMW anchorage

Internal bonded or unbonded post-tensioning anchor



The CONA[®] CMW internal bonded or unbonded post-tensioning anchorage offers an economical solution for various types of tanks or silos. It requires no buttresses in the walls of the tank, no extra local anti-bursting reinforcement and half the number of anchorages, thus stressing operations are reduced. In most cases the anchorage may be entirely concealed within the standard structural thickness of the tank wall. Available with tendon sizes from 2 up to 6 strands.



Egg shaped digester (Australia)

BBRVT CONA CMW anchorage

Internal bonded or unbonded post-tensioning anchor



Features

- Standard tendon sizes from 2 to 6 strands. Larger sizes upon request
- Optimised for 15.7mm diameter, 1,860 MPa strand
- No buttresses are required in the tank walls
- The anchorage may be entirely concealed within the structural thickness of the tank wall
- Number of anchorages per tendon are reduced
- Less stressing operations per tendon are required
- No local anti-bursting reinforcement is required
- Corrugated or smooth tendon duct utilizing either galvanized steel or plastic material
- For bonded applications the ducts are filled with high performance BBR grout
- System compatible with greased and HDPE sheathed monostrands
- Anchorage tested to ETAG 013 requirements

Available tendon sizes

Type of strands*

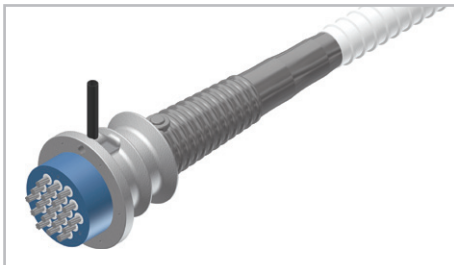
in	05	06
mm	12.9	15.7
mm ²	100	150
MPa	1,860	1,860

Tendon sizes

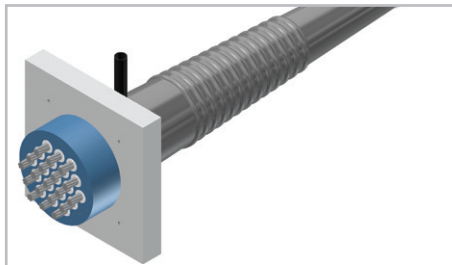
Strands	Characteristic ultimate resistance of tendon [kN]	
02	372	558
03	558	837
04	744	1,116
05	930	1,395
06	1,116	1,674

* 12.5mm and 15.3mm diameter strand, and 1,770 MPa tensile strength strand is also available

Compatible technologies



CONA CMI BT



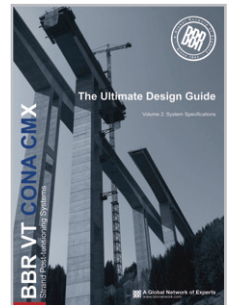
CONA CMI SP



Plastic Duct (flat & round)



Plain strand & monostrand



For further information download these brochures from our website.